

# RECREATION

gerflor.com



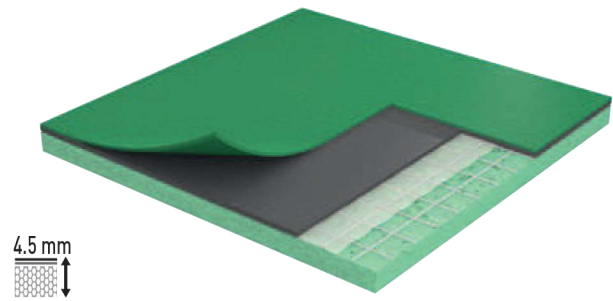
**Gerflor**<sup>®</sup>  
theflooringgroup

All Gerflor experience for a highly performing recreational floor: environmental friendly, low VOC, no solvent, no heavy metal and 100% recyclable suitable for leisure and sports activities.

# RECREATION 45



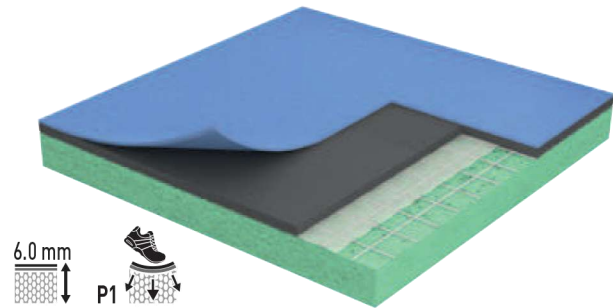
6563 Menta



# RECREATION 60



2402 Azul





6563 Menta



6160 Naranja



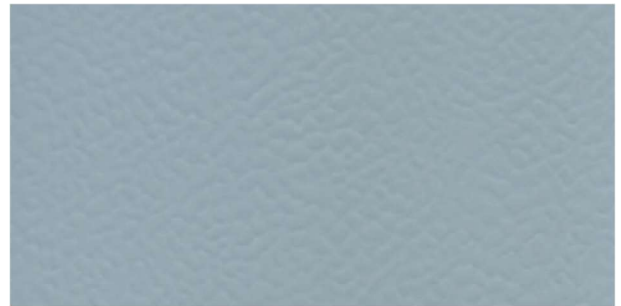
6556 Verde



6154 Roja



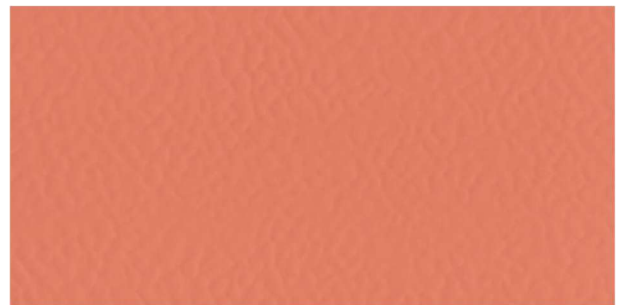
2402 Azul



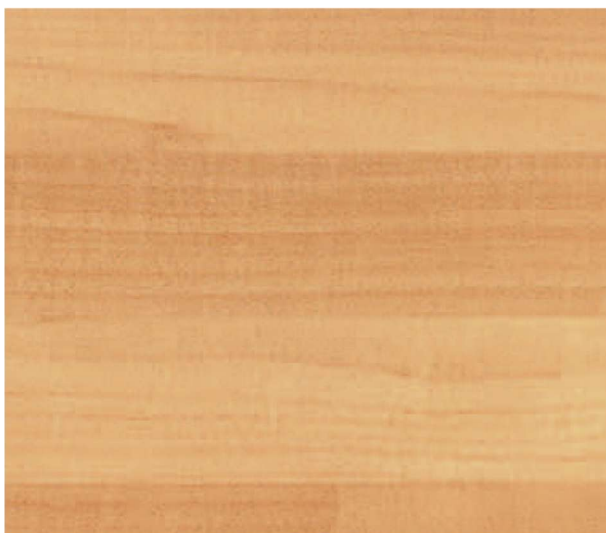
2711 Gris



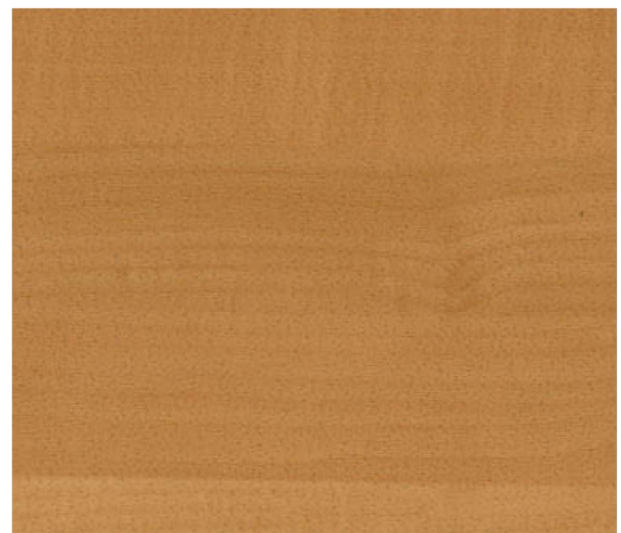
6614 Oceano\*



6157 Rosa\*



6062 Canadian Maple



6058 American Oak

\* Only available in Recreation 60

## RECREATION

PRODUCT DESCRIPTION DESCRIPCIÓN DEL PRODUCTO ОПИСАНИЕ	Standard / Norma / Стандарт	Requirement / Requisito / Требование	Units / Unidades / Единицы	RECREATION 45	RECREATION 60
Surface treatment / Tratamiento de superficie / Обработка поверхности	-	-	-	PUR PROTECT	PUR PROTECT
Surface complex / Complejo de superficie / Состав поверхности	-	-	-	100% PVC	
Foam / Espuma / Вспененная подложка	-	-	-	Closed cell foam / Espuma de celdas cerradas / Упорядоченная структура ячеек	
Thickness / Espesor / Толщина	EN 428	-	mm	4.5	6.0
Weight / Peso / Вес	EN 430	-	kg/m <sup>2</sup>	2.6	3.7
Length / Largo / Длина	EN 426	-	lm	20.5	20.5
Width / Ancho / Ширина	EN 426	-	lm	1.5	1.5

## SPORT PROPERTIES

### CARACTERÍSTICAS DEPORTIVAS / СПОРТИВНЫЕ ХАРАКТЕРИСТИКИ

Shock absorption / Amortiguación / Амортизация ударов	EN 14808	≥ 25	%	≤ 25	≥ 25
Vertical deformation Deformación vertical / Вертикальная деформация	EN 14809	≤ 3.5	mm	≤ 3.5	≤ 3.5
Sliding coefficient / Coeficiente de deslizamiento / Коэффициент скольжения	EN 13036-4	80 - 110	-	80 - 110	80 - 110
Ball bounce / Rebote de balón / Отскок мяча	EN 12235	≥ 90	%	≥ 90	≥ 90

## TECHNICAL CHARACTERISTICS

### CARACTERÍSTICAS TÉCNICAS / ЭКСПЛУАТАЦИОННЫЕ ХАРАКТЕРИСТИКИ

Abrasion resistance / Resistencia a la abrasión / Износостойкость	EN ISO 5470-1	≤ 1000	mg	≤ 350	≤ 350
Impact resistance / Resistencia al impacto / Ударопрочность	EN 1517	≥ 8	N/m	≥ 8	≥ 8
Indentation resistance / Resistencia al punzonamiento / Остаточные впадины	EN 1516	≤ 0.5	mm	≤ 0.5	≤ 0.5

## CLASSIFICATION / CLASIFICACIÓN / КЛАССИФИКАЦИЯ

Fire / Fuego / Огнестойкость	EN 13501-1	-	-	Cfl-s1	Cfl-s1
------------------------------	------------	---	---	--------	--------



Health  
& Safety



ISO 14001



Recycling



LCA  
Life Cycle  
Analysis

Committed to sustainable development

GERFLOR INTERNATIONAL

Tel.: +33 (0) 4 74 05 40 00

Fax.: +33 (0) 4 74 05 03 13

e-mail: gerflorcontract@gerflor.com

Gerflor Be CONNECTED!



www.gerflor.com

**Gerflor**  
the flooring group